

Console-700

Battery replacement



1 - Introduction	2
2 - Articles	2
3 - Spare parts	2
4 - Symbols used in the document	2
5 - Battery replacement	3

1 - INTRODUCTION

This document contains information regarding the battery replacement in the Console-700. If you need other information, please contact us.

FAVERO ELECTRONICS SRL

Web: www.favero.com

Email: support@favero.com

Skype: [favero_electronic](https://www.skype.com/en/contacts/individual/favero_electronic)

2 - ARTICLES



Art. 308-01 Console-700.

3 - SPARE PARTS



Art. R0064-0116 Lithium Battery 3.7V 10Ah for Console-700

4 - SYMBOLS USED IN THE DOCUMENT

The parts of the text that have a particular importance for the safety or for an appropriate use of the product are highlighted by the following symbols:



Possible danger to persons, if instructions or necessary precautions are not followed.



Important information about product use.

5 - BATTERY REPLACEMENT



Any operation regarding electric connections, the opening of the casing, the replacing of parts or batteries and in general any other operation not described in the manual in use has to be carried out by a qualified electrician.

1. Switch off the console.
2. Turn the console upside down.
3. Unscrew the 4 screws on the bottom as indicated by the arrows in **fig. 1**. Note the label with the battery type.



Figure 1

4. Open the console box with caution, paying attention not to stress the red-black cable of the battery (see **fig. 2**).

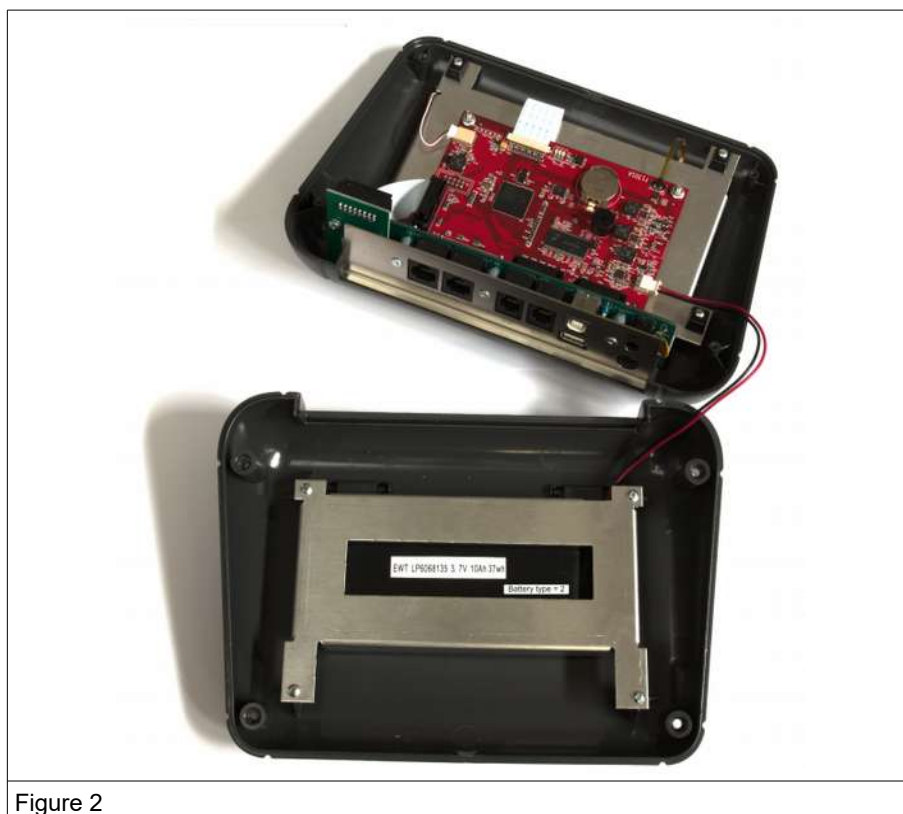


Figure 2

5. Gently pull out the battery connector from the F1301A electronic board (see **fig. 3**).

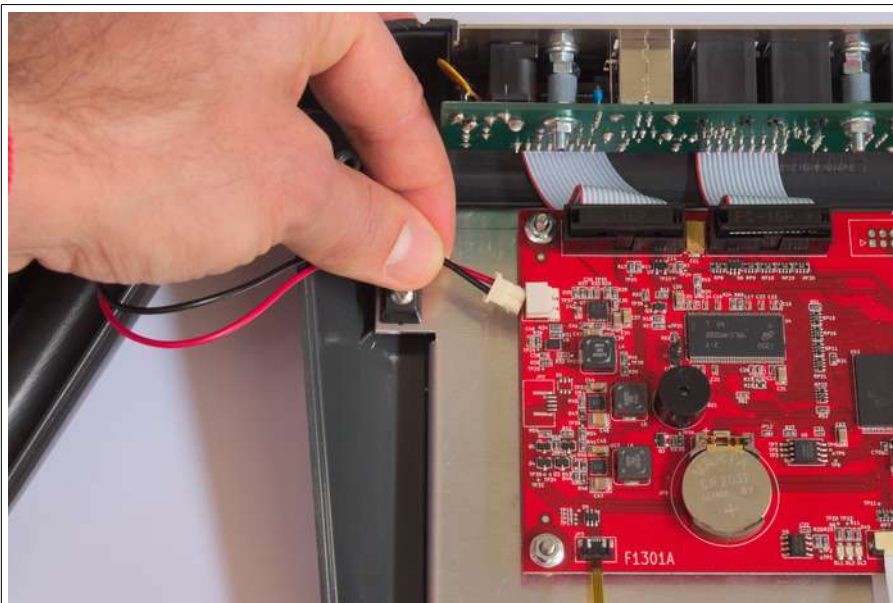


Figure 3

6. Unscrew the 4 fixing screws of the battery (indicated by the arrows of **fig. 4**). Note the label with the battery type.

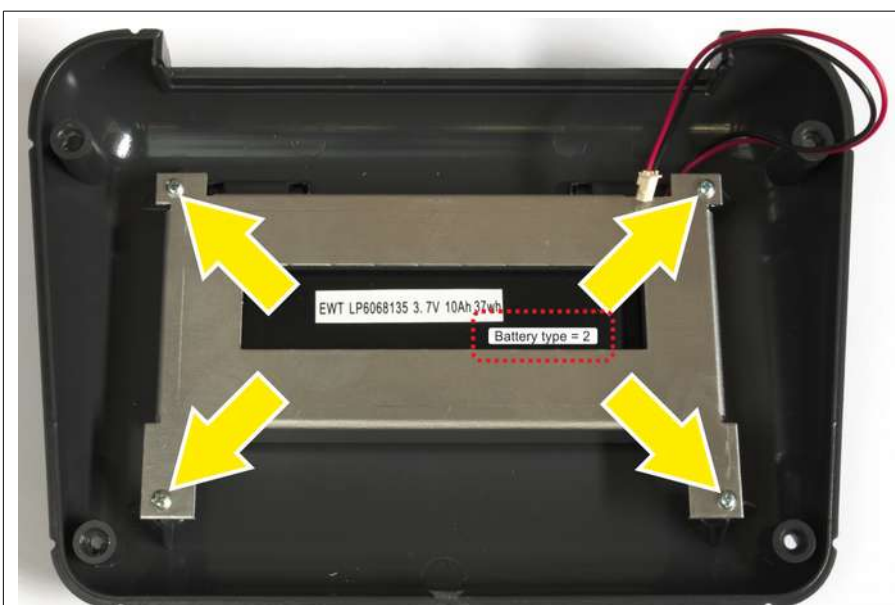


Figure 4

7. Remove the damaged battery from the metallic support and replace it with the new battery (spare part Art. R0064-0116). Pay attention to the position of the red-black cable, see **fig. 5**.

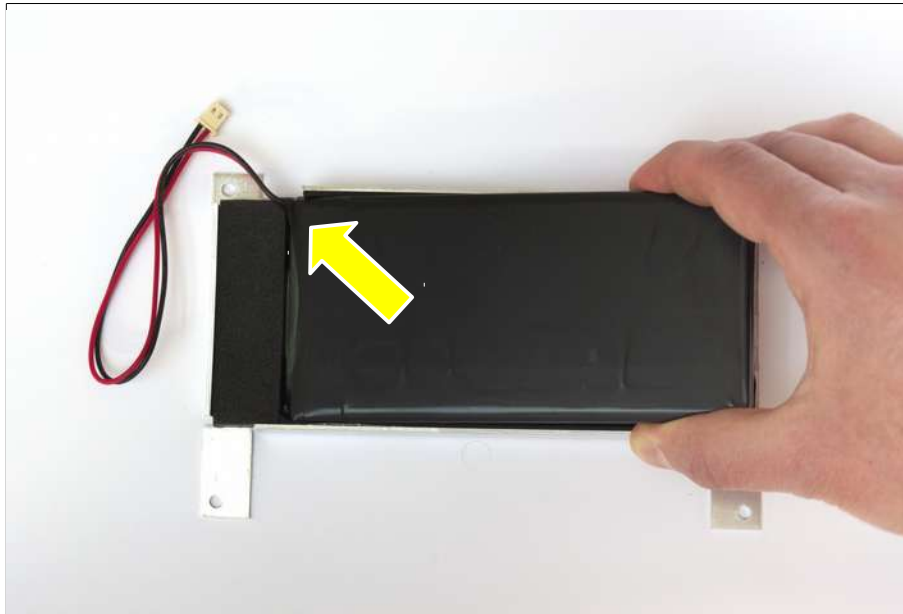


Figure 5

8. Place the battery with the metallic support on the bottom of the console box (the orientation of the support has to be like in **fig. 4**), and fix it with the 4 screws.
9. Gently insert the battery connector on the F1301A board (see previous **fig. 3**).
10. Close the front with the bottom of the box, paying attention that the rear metal sheet is inserted into the proper place (see **fig. 6**).



Figure 6

11. Fasten the 4 screws on the bottom of the unit (see again **fig. 1**).


12. After that you have closed the Console, you need to set the correct type of the battery. Select the "Configuration menu" by touch the  button (see **fig. 7**).



Figure 7

13. Set the "Battery type" parameter as that on the battery label (see **fig.8**). If there is not this parameter, to update the firmware of the Console.

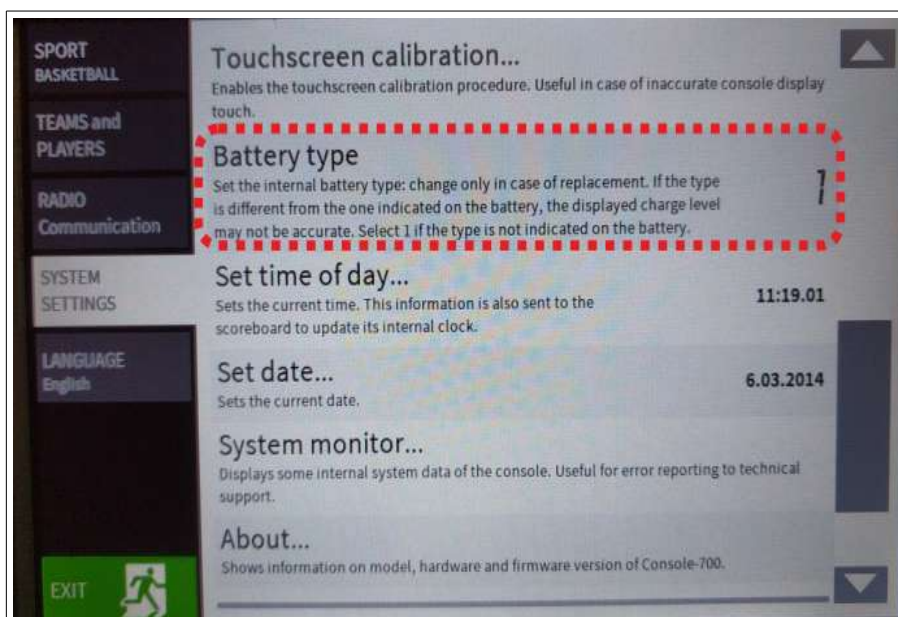


Figure 8