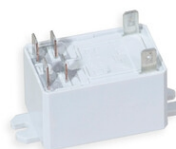


## Various Options



Art....+199R

---

Art....+199P

Poids: 0,18kg.

---

Art....+199Q

Poids: 0,01kg.



---

Art.+199M  
+ **OPTION: Electronic multi-coin  
Acceptor (included in the above item)**

---

Art.+200-001  
+ **mechanical TOKEN acceptor (included  
in the above item)**

---

Art.+200-050  
+ **mechanical coin acceptor for 0.50  
(included in the above item)**

---

Art.+200-100  
+ **mechanical coin acceptor for 1.00  
(included in the above item)**

---

Art.+200-200  
+ **mechanical coin acceptor for 2.00  
(included in the above item)**

---

Art.+200-E  
+ **electronic coin acceptor for 6 coins  
(included in the above item)**

---

Art.+200-EP  
+ **prearranged for electronic coin  
acceptor (without coin acceptor)**

---

Art.+200-M  
+ **mechanical coin acceptor (included in  
the above item)**

---

Art.+200-MP  
+ **prearranged for mechanical coin  
acceptor (without coin acceptor)**

---

Art.+240-075  
+ **OPTION: 75m Serial Cable (+25m)  
(included in the above item)**

---

Art.+240-100  
+ **OPTION: 100m Serial Cable (+50m)  
(included in the above item)**

---

Art.+240-125  
+ **OPTION: 125m Serial Cable (+75m)  
(included in the above item)**

---

Art.+240-150  
+ **OPTION: 150m Serial Cable (+100m)  
(included in the above item)**

---

Art.+240-175  
+ **OPTION: 175m Serial Cable (+125m)  
(included in the above item)**

---

Art.+240-200  
+ **OPTION: 200m Serial Cable (+150m)  
(included in the above item)**

---

Art.+333I  
+ **INTERNAL Electromagnetic Horn  
110dB-2m (included in the above item)**

---

Art.+400-S  
+ **BRACKETS** to fix the **BOX** under the  
**billiard (included in above item)**

---

Art.+640-000  
+ **OPTION: HOURLY BANDS** (included in  
**the above item)**

---

Art.+641-000  
+ **OPTION: with RESTART function**  
**(included in the above item)**

---

Art.+642-000  
+ **OPTION: with LAMP CONTROL**  
**(included in the above item)**

---

Art.+644-000  
+ **OPTION: Briar-Root finish** (included in  
**the above item)**

---

Art.+645-000  
+ **OPTION: Conformal coating on the**  
**electronic boards of the above item**

---

Art.+650-P  
+ **customized TERMODELTA front sticker**  
**(included in the above item)**

---