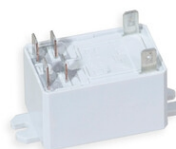


Various Options



Art....+199R
+ **OPTION: Relay 30A (included in the above item)**

Art....+199P
+ **OPTION: Protection from rain and water splashing for CTx0 and CTx1 (included in the above item)**
Weight: 0,18kg.

Art....+199Q
+ **OPTION: Protection from rain and water splashing for CTx2 (included in the above item)**
Weight: 0,01kg.



Art.+199M
+ **OPTION: Electronic multi-coin Acceptor (included in the above item)**

Art.+200-001
+ **mechanical TOKEN acceptor (included in the above item)**

Art.+200-050
+ **mechanical coin acceptor for 0.50 (included in the above item)**

Art.+200-100
+ **mechanical coin acceptor for 1.00 (included in the above item)**

Art.+200-200
+ **mechanical coin acceptor for 2.00 (included in the above item)**

Art.+200-E
+ **electronic coin acceptor for 6 coins (included in the above item)**

Art.+200-EP
+ **prearranged for electronic coin acceptor (without coin acceptor)**

Art.+200-M
+ **mechanical coin acceptor (included in the above item)**

Art.+200-MP
+ **prearranged for mechanical coin acceptor (without coin acceptor)**

Art.+240-075
+ **OPTION: 75m Serial Cable (+25m) (included in the above item)**

Art.+240-100
+ **OPTION: 100m Serial Cable (+50m) (included in the above item)**

Art.+240-125
+ **OPTION: 125m Serial Cable (+75m) (included in the above item)**

Art.+240-150
+ **OPTION: 150m Serial Cable (+100m) (included in the above item)**

Art.+240-175
+ **OPTION: 175m Serial Cable (+125m) (included in the above item)**

Art.+240-200
+ **OPTION: 200m Serial Cable (+150m) (included in the above item)**

Art.+333I
+ **INTERNAL Electromagnetic Horn
110dB-2m (included in the above item)**

Art.+400-S
+ **BRACKETS to fix the BOX under the
billiard (included in above item)**

Art.+640-000
+ **OPTION: HOURLY BANDS (included in
the above item)**

Art.+641-000
+ **OPTION: with RESTART function
(included in the above item)**

Art.+642-000
+ **OPTION: with LAMP CONTROL
(included in the above item)**

Art.+644-000
+ **OPTION: Briar-Root finish (included in
the above item)**

Art.+645-000
+ **OPTION: Conformal coating on the
electronic boards of the above item**

Art.+650-P
+ **customized TERMODELTA front sticker
(included in the above item)**
