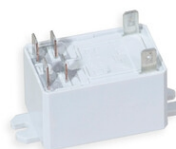


Various Options



Art....+199R

Art....+199P

Gewicht: 0,18kg.

Art....+199Q

Gewicht: 0,01kg.



Art.+199M

+ **OPTION: Electronic multi-coin Acceptor (included in the above item)**

Art.+200-001

+ **mechanical TOKEN acceptor (included in the above item)**

Art.+200-050

+ **mechanical coin acceptor for 0.50 (included in the above item)**

Art.+200-100

+ **mechanical coin acceptor for 1.00 (included in the above item)**

Art.+200-200

+ **mechanical coin acceptor for 2.00 (included in the above item)**

Art.+200-E

+ **electronic coin acceptor for 6 coins (included in the above item)**

Art.+200-EP

+ **prearranged for electronic coin acceptor (without coin acceptor)**

Art.+200-M

+ **mechanical coin acceptor (included in the above item)**

Art.+200-MP

+ **prearranged for mechanical coin acceptor (without coin acceptor)**

Art.+240-075

+ **OPTION: 75m Serial Cable (+25m) (included in the above item)**

Art.+240-100

+ **OPTION: 100m Serial Cable (+50m) (included in the above item)**

Art.+240-125

+ **OPTION: 125m Serial Cable (+75m) (included in the above item)**

Art.+240-150

+ **OPTION: 150m Serial Cable (+100m) (included in the above item)**

Art.+240-175

+ **OPTION: 175m Serial Cable (+125m) (included in the above item)**

Art.+240-200

+ **OPTION: 200m Serial Cable (+150m) (included in the above item)**

Art.+333I

+ **INTERNAL Electromagnetic Horn 110dB-2m (included in the above item)**

Art.+400-S
+ **BRACKETS** to fix the BOX under the
billiard (included in above item)

Art.+640-000
+ **OPTION: HOURLY BANDS** (included in
the above item)

Art.+641-000
+ **OPTION: with RESTART function**
(included in the above item)

Art.+642-000
+ **OPTION: with LAMP CONTROL**
(included in the above item)

Art.+644-000
+ **OPTION: Briar-Root finish** (included in
the above item)

Art.+645-000
+ **OPTION: Conformal coating on the
electronic boards of the above item**

Art.+650-P
+ **customized TERMODELTA front sticker**
(included in the above item)
