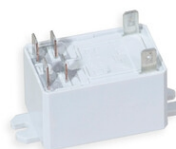


Various Options



Art....+199R

Art....+199P

Peso: 0,18kg.

Art....+199Q

Peso: 0,01kg.



Art.+199M
+ **OPTION: Electronic multi-coin
Acceptor (included in the above item)**

Art.+200-001
+ **mechanical TOKEN acceptor (included
in the above item)**

Art.+200-050
+ **mechanical coin acceptor for 0.50
(included in the above item)**

Art.+200-100
+ **mechanical coin acceptor for 1.00
(included in the above item)**

Art.+200-200
+ **mechanical coin acceptor for 2.00
(included in the above item)**

Art.+200-E
+ **electronic coin acceptor for 6 coins
(included in the above item)**

Art.+200-EP
+ **prearranged for electronic coin
acceptor (without coin acceptor)**

Art.+200-M
+ **mechanical coin acceptor (included in
the above item)**

Art.+200-MP
+ **prearranged for mechanical coin
acceptor (without coin acceptor)**

Art.+240-075
+ **OPTION: 75m Serial Cable (+25m)
(included in the above item)**

Art.+240-100
+ **OPTION: 100m Serial Cable (+50m)
(included in the above item)**

Art.+240-125
+ **OPTION: 125m Serial Cable (+75m)
(included in the above item)**

Art.+240-150
+ **OPTION: 150m Serial Cable (+100m)
(included in the above item)**

Art.+240-175
+ **OPTION: 175m Serial Cable (+125m)
(included in the above item)**

Art.+240-200
+ **OPTION: 200m Serial Cable (+150m)
(included in the above item)**

Art.+333I
+ **INTERNAL Electromagnetic Horn
110dB-2m (included in the above item)**

Art.+400-S
+ **BRACKETS** to fix the BOX under the
billiard (included in above item)

Art.+640-000
+ **OPTION: HOURLY BANDS** (included in
the above item)

Art.+641-000
+ **OPTION: with RESTART function**
(included in the above item)

Art.+642-000
+ **OPTION: with LAMP CONTROL**
(included in the above item)

Art.+644-000
+ **OPTION: Briar-Root finish** (included in
the above item)

Art.+645-000
+ **OPTION: Conformal coating on the
electronic boards of the above item**

Art.+650-P
+ **customized TERMODELTA front sticker**
(included in the above item)
