

FULL-ARM-01/W (Art.825)

Recording machine for Fencing - WALL VERSION

Technical data:

- **According to the F.I.E. rule.** The white lamps are however formed of groups of yellow leds in order to obtain a better quality and low consumption.
- **Control of three weapons.**
- **Easy updating of the program** with the replacement of only one electronic component.
- **Manual or automatic rearmament**, selectable 1, 3 or 5 seconds.
- **Sound volume variable on 2 levels:** high and low.
- **Function of lights test** and correct functioning of the weapons' circuits.
- **Power supply:** 12Vac or 12Vdc, 400mA.
- **Low consumption:** 0.07A + 0.08A for each lamp lighted at 12Vdc.
- **Ideal to be fed by a small rechargeable Lead battery of 6-7Ah.** In this case, its autonomy, with one light always on, is of approx. 40 hours. The recording machine signals when the battery needs to be recharged or if the supply voltage is lower than 11VDC. This control is very useful in order to avoid excessive discharge that deteriorates the battery. Batteries (Art. 828) and battery-chargers (Art.169) are available.
- **The lights are formed of groups of leds (typical life: 100.000 hours!).** The usual lamps and replacement problems are eliminated.
- **The 4 lights, the green one, the red one and the 2 white ones are formed of groups of 20 leds each**, respectively green, red and yellow. The yellow lamps which signal the loss of electricity are visualized with 2 yellow leds each.
- **It is equipped of 2 DATA-LINE outlets for the connection of 2 LIGHTS REPEATERS.** These connections are electrically insulated by means of optocouplers for safety. If it becomes necessary to carry out a lights control of high power, special controllers (CONTROL-LAMP) can be connected.
- **The membrane keyboard is sturdy**, reliable (5 million contacts) and it is protected from damage caused by dirt and liquids.
- **The container made of shockproof plastic is resistant** to the violent shocks of the weapons. In the same way the lights are protected.
- **Available in 2 versions: table version (Art.824) and wall version (Art.825).** The FULL-ARM-01 wall version can be transformed in the table version by applying the special TABLE ADAPTOR (Art.826). Vice versa, the table version can become wall version by removing this adaptor.
- **The wall version (Art.825 FULL-ARM-01/W)** is particularly recommended for fixed electrical systems in fencing Clubs. It is supplied with a terminal block for the direct connection of the weapons and of the power supply. The wall fixing is simple and immediate by means of 2 frontal screws. On the opposite wall you can fix the LIGHTS REPEATER. Both machines have an equal and pleasant aspect and are not cumbersome with only 4 cm thickness. The connection between FULL-ARM-01 and the LIGHTS REPEATER is carried out by means of a common telephone cable with 4 wires which can be up to 100 m long. In this way the system becomes very simple and economical.
- **Warranty: 2 years.**



Art.825
FULL-ARM-01/W 3-weapon apparatus. Wall version
Power supply **not included**. We suggest the art.954 or 828 + 169
Size: 56x19x4cm. - Weight: 1.1kg.



Art.954
Power supply unit, 90-264V/12Vdc 2.5A, medical
Weight: 0.34kg.



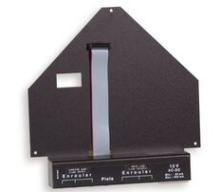
Art.837
Wired Remote Control for FA-01/W by 3.5m long cable
Size: 15,5x9x1,6cm. - Weight: 0.5kg.



Art.826
TABLE ADAPTOR for FA-01-05
To transform the FA-01/W from the wall version to the desk version
Size: 28x22,5x8,5cm. - Weight: 0.65kg.



Art.826-W
WALL ADAPTOR for FA-01-05
The insertion of the connectors comes from the bottom
Size: 20,2x20,5x3,5cm. - Weight: 0.47kg.



Art.894-A
LIGHTS REPEATER 230V
Size: 56x19x4cm. - Weight: 1.22kg.



Art.894-B
LIGHTS REPEATER 115V
Size: 56x19x4cm. - Weight: 1.22kg.



Art.894-C
LIGHTS REPEATER 12V
Power supply: 12V 400mA - not included. We suggest the art.954 or 828+169
Size: 56x19x4cm. - Weight: 1kg.





Art.824
FULL-ARM-01/T 3-weapon apparatus.
Table version
Power supply **not included**. We suggest the
art.954 or 828 + 169
Size: 56x23,5x9cm. - Weight: 1.8kg.



Art.852
BOX-04 transport case for
Full-Arm-01-05
Size: 60x40x13,5cm. - Weight: 3.0kg.



Art.828
RECHARGEABLE BATTERY 12V/7Ah with
connectors
Size: 15.5x12.5x9cm. - Weight: 2.7kg.



Art.169
BATTERY CHARGER 100-240V/13,8Vdc
1,5A
For battery art.828
Weight: 0.32kg.
